

Permanent Media Systems

Y-Strainer
Simplex

Duplex
Multibasket

Temporary



Standard cast pipeline strainers

EATON

Powering Business Worldwide

Standard cast pipeline strainers

High performance systems for keeping debris out of your downstream equipment

Eaton standard cast pipeline strainers protect pumps, filters, nozzles, flow meters, valves, heat exchangers, condensers, oil burners, boilers, and other process system components from damaging pipeline debris. Eaton maintains the largest and broadest inventory of strainers in the industry, and can provide off-the-shelf delivery of simplex, duplex, and Y strainers in metals such as cast iron, carbon steel, bronze, and stainless steel.

Eaton standard cast pipeline strainers meet customers' expectations and the highest standards, including:

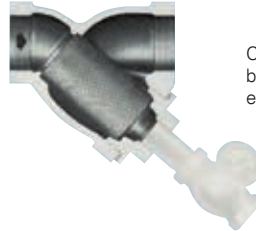
- ISO 9001-2015 quality management
- Properly sized components to meet any specified retention requirement and flow rate
- NSF approved coatings

For more than 50 years, Eaton has led the way with designs that meet the growing and vigorous demands of process and manufacturing industries, utilities, and municipalities around the world.

The American Bureau of Shipping (ABS) has added Eaton's Model 72 and 73 simplex strainers and the Model 53BTX duplex strainer to its list of Type Approved products.

MODEL 85 Y-STRAINER

- 1/4" to 10" threaded, flanged, or socket weld connections
- Carbon steel and stainless steel
- Compact design
- Bolted or threaded covers
- Standard stainless steel screens
- Horizontal or vertical installation



Cross-section of a Y Strainer with blow off connection for quick and easy clean-out.

MODEL 72 SIMPLEX BASKET STRAINER

- 3/8" to 8" threaded or flanged connections
- Iron, bronze, carbon steel, or stainless steel
- Quick open cover—no tools needed
- Heavy wall construction
- Large capacity baskets
- Machined basket seat
- Threaded drain
- Perforated or mesh 316 stainless steel basket
- Mounting feet for stable installation for flanged units 2" and larger
- Basket perforations from 1/32" to 1/2"
- Basket mesh from 20 to 400
- Optional: basket and seal materials, vent valves, gauge/vent taps, magnetic basket inserts, pressure differential gauge and switch



MODEL 72SJ STEAM JACKETED BASKET STRAINER

- 1" to 8" flanged connections
- Carbon steel or stainless steel
- NPT steam connections
- Up to 100 psi steam pressure
- Quick open cover—no tools required
- Large capacity basket
- Threaded drain plug
- Machined basket seat
- Viton® seals
- Perforated or mesh 316 stainless steel basket
- Basket perforations from 1/32" to 1/2"
- Basket mesh from 20 to 400
- Optional: vent valve and drain valves, gauge/vent taps, pressure differential gauge and switches



MODEL 72L TEFZEL-LINED BASKET STRAINER

- 1" to 6" flanged connections
- Carbon steel with abrasion resistant 1/8" Tefzel® liner
- Excellent corrosion resistance
- Tefzel-coated baskets
- Service temperatures to 300 °F
- Quick opening covers
- Large capacity baskets
- Flanged drain
- Low cost alternative to exotic alloy strainers
- Optional: MONEL® or HASTELLOY® C baskets



MODEL 50 PLUG TYPE DUPLEX BASKET STRAINER

- 5", 6", or 8" flanged connections
- Iron, bronze, carbon steel, or stainless steel
- Continuous flow, no shutdown for basket cleaning
- Rugged tapered plug design
- Lift jack prevents galling of the plug
- Quick open cover—no tools needed
- Large capacity baskets
- Threaded drain
- Machined basket seat
- Perforated or mesh 316 stainless steel basket
- Basket perforations from 1/32" to 1/2"
- Basket mesh from 20 to 400
- Optional: MONEL baskets, vent and drain valves, gauge/vent taps, pressure differential gauge and switches, cast iron and stainless steel diverter plug, magnetic basket inserts and a variety of seal materials



MODEL 30R ECONOMY BASKET STRAINER

- 1-1/2" to 8" threaded or flanged connections
- Iron
- Hand removable cover
- Drain plug
- Machined basket seat
- Perforated or mesh 316 stainless steel basket
- Basket perforations from 1/32" to 1/2"
- Basket mesh from 20 to 400
- Optional: MONEL baskets, vent and drain valves, gauge/vent taps, magnetic basket inserts, and pressure differential gauges and switches



MODEL 53BTX BALL TYPE DUPLEX BASKET STRAINER

- 3/4" to 4" threaded or flanged connections
- Iron, bronze, carbon steel, or stainless steel
- Dynamic sealing design for long life
- Easy-to-operate lever handle—no gear box required
- Unique seat and seal design requires no adjustments
- Teflon® seats for longer service life
- Foot pads for rock solid installation
- Double-stem O-rings for positive sealing
- Easy to access body vent valve
- Side drain plugs on each basket well
- Piston seal strainer basket cover
- Easy access for diverter cartridge removal
- 316 stainless steel ball design



MODEL 73 STRAIGHT FLOW BASKET STRAINER

- 10" to 18" flanged connections
- Iron or bronze
- Quick open cover
- Straight through flow design
- Low pressure loss
- Convolutd basket design
- Hand removable basket
- Threaded drain
- Buna-N® O-ring seal
- Low profile
- No tools required for access
- Perforated or mesh 316 stainless steel basket
- Basket perforations from 1/32" to 1/2"
- Basket mesh of 20, 40, or 60
- Optional: vent valves, drain valves, gauge/vent taps, pressure differential gauge and switches



Unique diverter cartridge assures leak-tight isolation of basket chamber during cleaning. A double sealing system on the upper and lower stems guards against any possible leakage. If service becomes necessary, just remove four bolts and the cartridge slides right out the top of the strainer body.



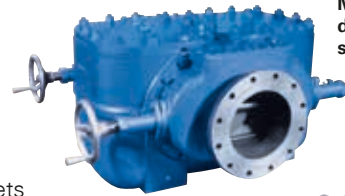
MODEL 52 LARGE DUPLEX BASKET STRAINER

- 10" to 18" flanged connections
- Iron or bronze
- Continuous flow—no shutdown for basket cleaning
- Compact butterfly valve design
- Quick opening covers
- Convoluted-design baskets
- Threaded drain
- Perforated or mesh stainless steel baskets
- Vent
- Positive shutoff
- Basket perforations from 1/32" to 1/2"
- Basket mesh of 20, 40, or 60
- Optional: Ductile iron construction, MONEL baskets, vent valve and drain valves, gauge/vent taps, pressure differential gauge and switches, and magnetic basket inserts



MODEL 510 / 570 COMPACT MULTI-BASKET STRAINER

- 8" to 24" flanged connections
- Iron or carbon steel
- Bolted covers
- Compact
- Threaded drain
- Perforated or mesh stainless steel baskets
- Basket perforations from 1/32" to 1/2"
- Basket mesh of 20, 40, or 60
- Model 510:
 - Four baskets per strainer (two per side)
- Model 570:
 - Sliding gate design
 - Continuous flow—no shutdown for basket cleaning
 - Eight baskets per strainer (four per side)
- Optional: Ductile iron construction, MONEL baskets, vent valve and drain valves, gauge/vent taps, pressure differential gauge and switches, and magnetic basket inserts



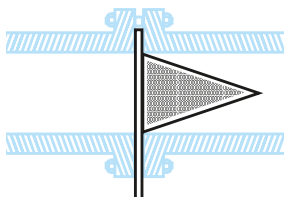
**Model 570
duplex
strainer**



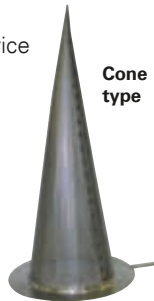
**Model 510
simplex
strainer**

MODEL 92 TEMPORARY STRAINER

- Designed for use in new pipeline start-up service
- Line flushing after any modification work
- 2" to 24" flanged connection
- Stainless steel or MONEL
- ANSI Classes 150, 300, and 600
- Perforations from 1/32" to 1/2" diameter
- Mesh liners of 20, 40, 60, 80, and 100 (best with basket type strainers)
- Optional: Alloy construction, RTJ-style connections



Cone type temporary strainer is shown bolted between two pipe flanges



**Cone
type**



**Basket
type**

ADDITIONAL FABRICATED STRAINERS AVAILABLE

- Custom fabricated pipeline strainers offer unique designs that fit the exact requirements of any application
- Designed and constructed to meet worldwide quality standards and required codes



**Model 90
simplex
strainer**



**Model 950B duplex
offset strainer (BC/QOC)**



**Model 91 T-type
strainer**

North America
44 Apple Street
Tinton Falls, NJ 07724
Toll Free: 800 656-3344
(North America only)
Tel: +1 732 212-4700

Europe/Africa/Middle East
Auf der Heide 2
53947 Nettersheim, Germany
Tel: +49 2486 809-0

Friedensstraße 41
68804 Altlufßheim, Germany
Tel: +49 6205 2094-0

An den Nahewiesen 24
55450 Langenlonsheim, Germany
Tel: +49 6704 204-0

Greater China
No. 7, Lane 280,
Linhong Road
Changning District, 200335
Shanghai, P.R. China
Tel: +86 21 5200-0099

Asia-Pacific
100G Pasir Panjang Road
#07-08 Interlocal Centre
Singapore 118523
Tel: +65 6825-1668

**For more information, please
email us at filtration@eaton.com
or visit www.eaton.com/filtration**

© 2022 Eaton. All rights reserved. All trademarks and registered trademarks are the property of their respective owners. All information and recommendations appearing in this brochure concerning the use of products described herein are based on tests believed to be reliable. However, it is the user's responsibility to determine the suitability for his own use of such products. Since the actual use by others is beyond our control, no guarantee, expressed or implied, is made by Eaton as to the effects of such use or the results to be obtained. Eaton assumes no liability arising out of the use by others of such products. Nor is the information herein to be construed as absolutely complete, since additional information may be necessary or desirable when particular or exceptional conditions or circumstances exist or because of applicable laws or government regulations.

US
EF-SCPS
04-2022