



**Smart Membrane Solutions**  
Putting Process Managers at Ease

# Parts and Accessories List



Contact Smart Membrane Solutions:



+64 3 741 1808



[info@smartmembranesolutions.co.nz](mailto:info@smartmembranesolutions.co.nz)



PO Box 148, Rolleston 7643, New Zealand



[www.smartmembranesolutions.co.nz](http://www.smartmembranesolutions.co.nz)

# Parts List

## Contents

6.3" UF Membrane Plant Accessories.....	2
8.0" UF Membrane Accessories.....	2
3.8" RO Membrane Plant Accessories .....	3
8.0" RO Membrane Housing Layout Options .....	3
3.8" RO Membrane Plant Accessories .....	3
8.0" RO Membrane Accessories .....	3
Membrane Housing Layout Options.....	4
Permeate Connection Hoses.....	5
Permeate Connection Recommended Installation.....	6
Removal Tools.....	7
Seal Selection .....	7



## 6.3" UF Membrane Plant Accessories



### 63-L-1138-IC-PS

**Description:** 6.3" Gold polysulfone ATD with lip seal profile to suit 1.138" permeate tube



### L-L-BEP-ST

**Description:** Large Stainless Steel Blank End Plug with lip seal profile to suit 1.125" and 1.138" permeate tubes



### 63-L-1138-IC-ST08

**Description:** 6.3" Stainless Steel ATD with lip seal profile to suit 1.138" permeate tube. 8mm thick SS



### L-L-VITON

**Description:** Large Lip Seal ORANGE VITON to suit 1.138" permeate tube



### L-L-BEP

**Description:** Large Blank End Plug with lip seal profile to suit 1.125" and 1.138" permeate tubes



### Permeate hoses

**Description:** Permeate Connection Hoses come in a range of sizes, see table on page 6 for sizes

## 8.0" UF Membrane Accessories



### 80-L-1138-IC-ST10

**Description:** 8.0" Stainless Steel ATD with lip seal profile to suit 1.138" permeate tube. 10mm thick SS



### L-L-VITON

**Description:** Large Lip Seal ORANGE VITON to suit 1.138" permeate tube



### L-L-BEP

**Description:** Large Blank End Plug with lip seal profile to suit 1.125" and 1.138" permeate tubes



### Permeate hoses

**Description:** Permeate Connection Hoses come in a range of sizes, see table on page 6 for sizes



### L-L-BEP-ST

**Description:** Large Stainless Steel Blank End Plug with lip seal profile to suit 1.125" and 1.138" permeate tubes



## 3.8" RO Membrane Plant Accessories



### 38-L-0830-IC-PS

**Description:** 3.8" Polysulfone ATD with lip seal profile to suit 0.830" permeate tube



### S-L-EPDM

**Description:** Small Lip Seal BLACK EPDM to suit 0.830" permeate tube



### 38-L-0830-IC-ST06

**Description:** 3.8" Stainless Steel ATD with lip seal profile to suit 0.830" permeate tube. 6mm thick SS



### S-L-VITON

**Description:** Small Lip Seal ORANGE VITON to suit 0.830" permeate tube



### S-L-BEP

**Description:** Small Blank End Plug with lip seal profile to suit 0.830" Permeate tube



### Permeate hoses

**Description:** Permeate Connection Hoses come in a range of sizes, see table on page 6 for sizes



### S-L-BEP-ST

**Description:** Small Stainless Steel Blank End Plug with lip seal profile to suit 0.830" permeate tubes.

## 8.0" RO Membrane Accessories



### 80-L-1125-IC-PS

**Description:** 8.0" Gold polysulfone ATD with lip seal profile to suit 1.125" permeate tube



### L-L-BEP-ST

**Description:** Large Stainless Steel Blank End Plug with lip seal profile to suit 1.125" and 1.138" permeate tubes



### 80-L-1125-IC-ST10

**Description:** Designed for 8.0" RO 8.0" Stainless Steel ATD with lip seal profile to suit 1.125" permeate tube. 10mm thick SS



### L-L-EDPM

**Description:** Large Lip Seal BLACK EPDM to suit 1.125" permeate tube



### L-L-BEP

**Description:** Large Blank End Plug with lip seal profile to suit 1.125" and 1.138" permeate tubes



### Permeate hoses

**Description:** Permeate Connection Hoses come in a range of sizes, see table below for sizes



## Membrane Housing Layout Options

### Stainless Layout Option

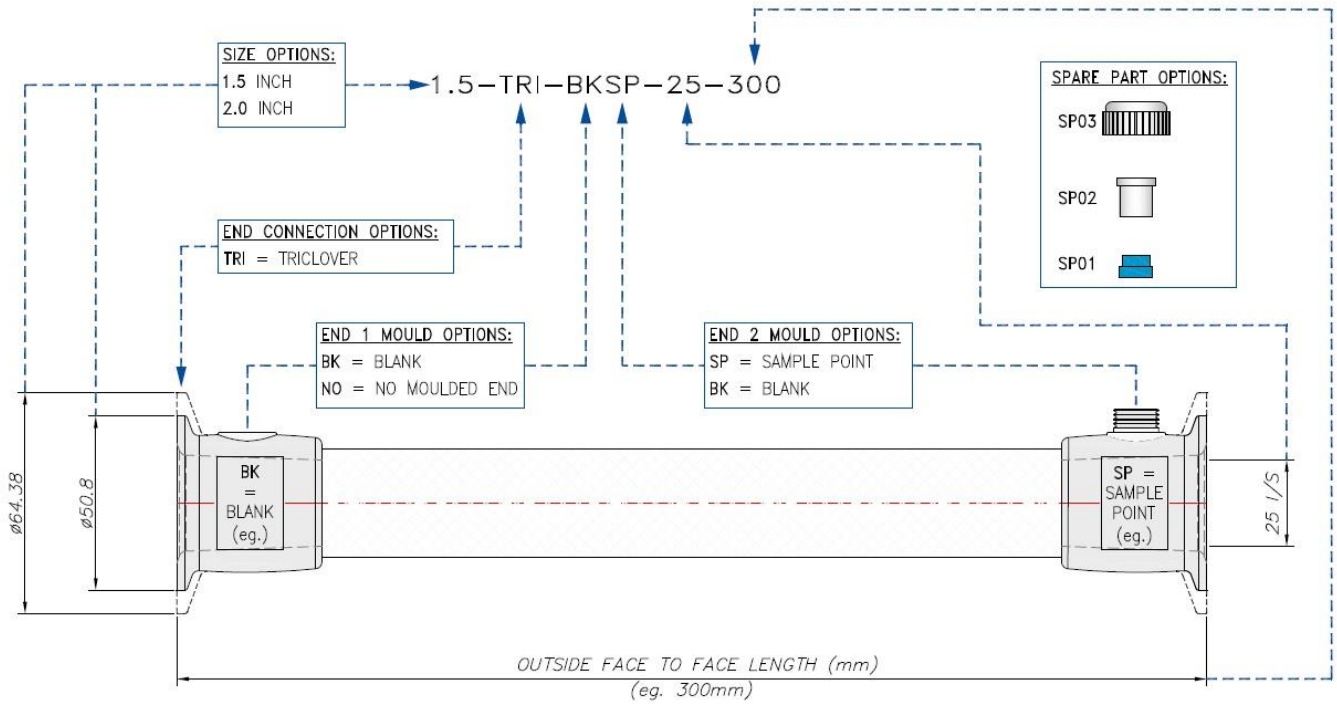


### Polysulfone Layout Option





## Permeate Connection Hoses

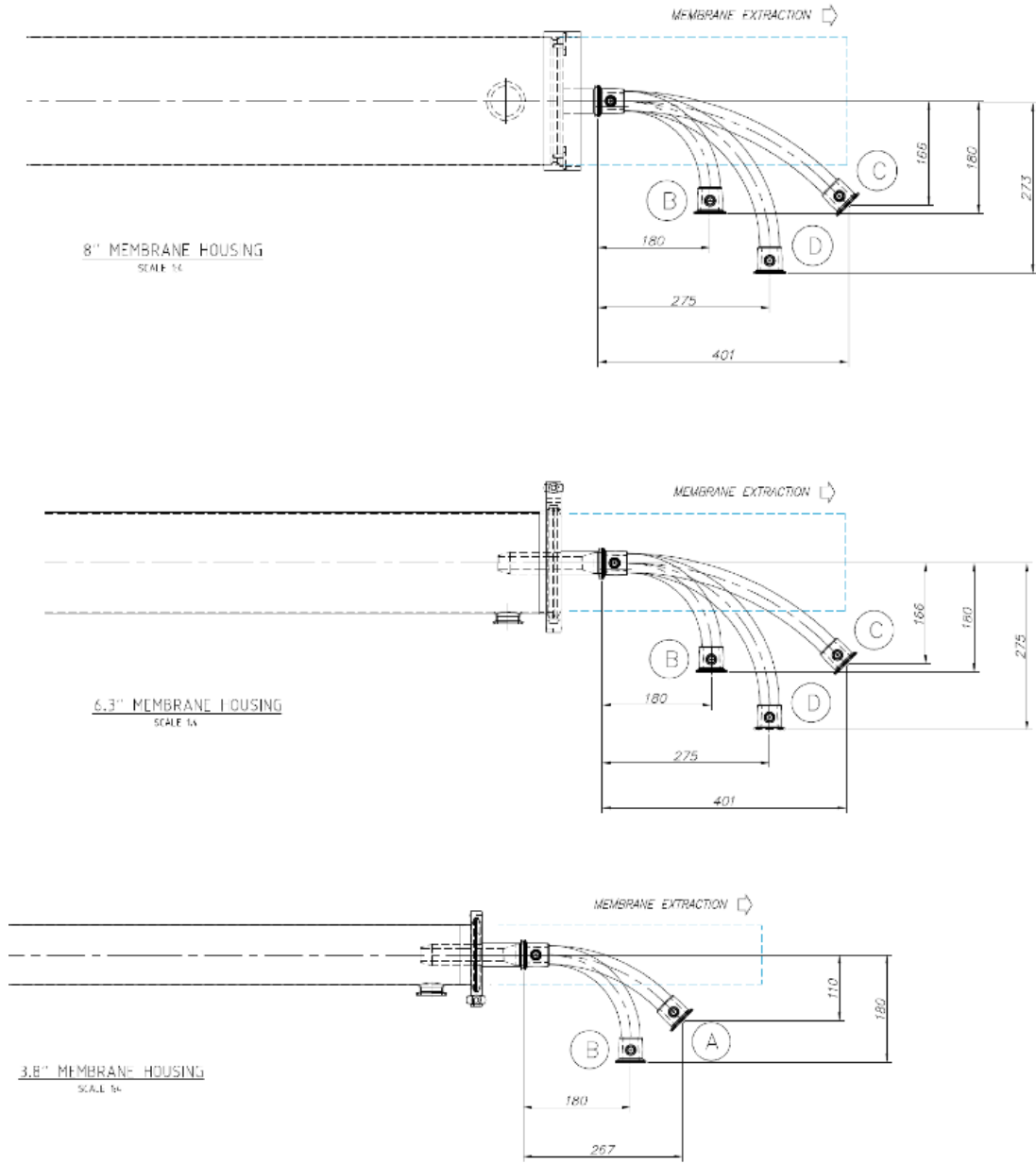


Temperature range:  $-10^{\circ}\text{C} + 60^{\circ}\text{C}$ , Max Working Pressure 6 Bar, Max Bend Radius  $130^{\circ}$

Product Description	Code	SAP Code
Sample Point		
1.5" Tri-clover with Sample Point 25mm Dia hose 300mm long	1.5-TRI-BKSP-25-300	52023659
1.5" Tri-clover with Sample Point 25mm Dia hose 450mm long	1.5-TRI-BKSP-25-450	52023660
2.0" Tri-clover with Sample Point 25mm Dia hose 300mm long	2.0-TRI-BKSP-25-300	52023661
2.0" Tri-clover with Sample Point 25mm Dia hose 450mm long	2.0-TRI-BKSP-25-450	52023662



## Permeate Connection Recommended Installation



### Hose Type

Hose No.	Angle	Total Length	Ferrule Size	Radius
A	45°	300mm	ø38/51 O/D	275mm
B	90°	300mm	ø38/51 O/D	138mm
C	45°	450mm	ø38/51 O/D	465mm
D	90°	450mm	ø38/51 O/D	233mm



## Seal Selection

EPDM – perfect for non chlorinated systems, specifically RO and NF applications. VITON – highly recommended for chlorinated environments, specifically UF applications.



EDPM Lip Seal



Viton Lip Seal

## Removal Tools



### MTK-SPATULA

**Description:** ATD Removal Spatula Tool



### BEPREMOVAL

**Description:** Blank End Plug Removal Tool



### MTK

**Description:** Complete Tool Kit  
Housing End Cap Removal Tools  
Removal of Membranes from the Housing  
Membrane Push Rod Tool  
Membrane Ejector Block Pigging Tools  
Removal of ATD's and Blank End Plugs from the Membranes



# Enquiry and Ordering Information

Smart Membrane Solutions,

For any enquiry please send detail of your enquiry to [info@smartmembranesolutions.co.nz](mailto:info@smartmembranesolutions.co.nz)

Orders,

A company Purchase Order must be received before product is dispatched.

Please send Purchase Order by email to: [orders@smartmembranesolutions.co.nz](mailto:orders@smartmembranesolutions.co.nz)

Visit our web site at [www.smartmembranesolutions.co.nz](http://www.smartmembranesolutions.co.nz) for detailed product information and specifications.

